



2" x 30" Nozzle Repair Clock Spring® Contour Composite Wrapping

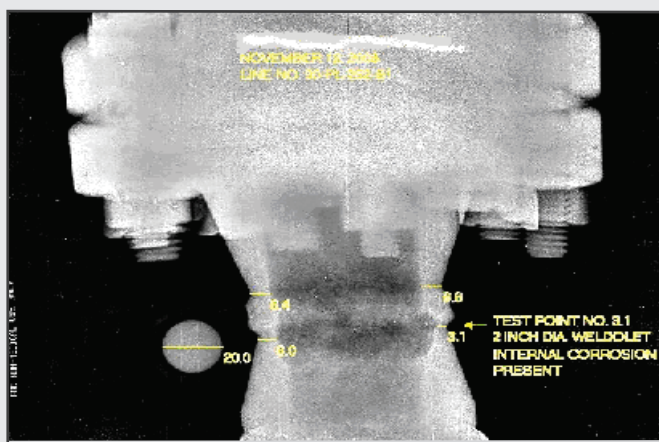
1 Defect area

The nozzle/main header after the surface preparation .SKPS designed a Clock Spring Contour composite repair according to ISO 24817 and attended to the repair in less then 48 hours from initial contact.



2 Radiograph image of the nozzle.

During a routine inspection campaign for an offshore oil producing company, a 2" nozzle (from a 36" main header) with internal corrosion was detected and needed immediate attention.



3 Clock Spring® Contour Application

The Final repair.



4 Design Criteria

Operating Temperature	: 120° F
Operating Pressure	: 80PSI
Defect Type	: Internal Corrosion
Size	: 2 inch weldolet
Design Pressure	: 250PSI
Defect Analysis	: Wall thinning with metal loss up to 50 %
Lifetime	: 5Years